

205090" 5822660

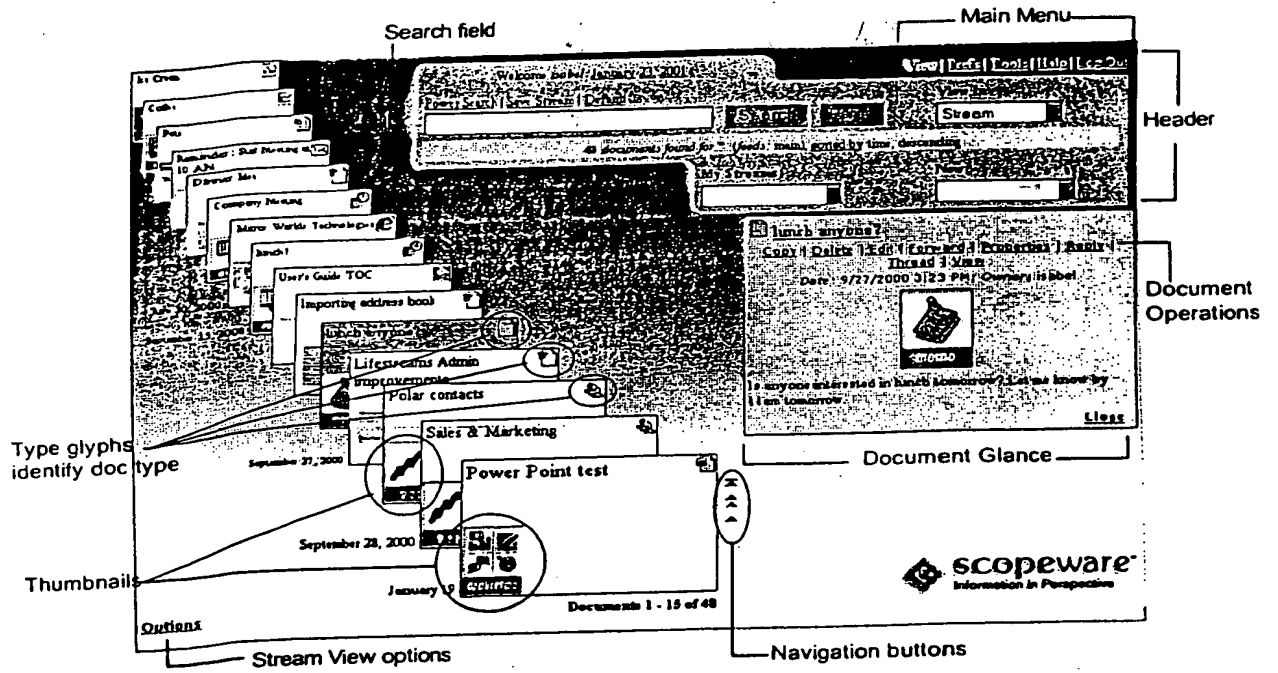


FIG. 1

Universal Data Model Translation

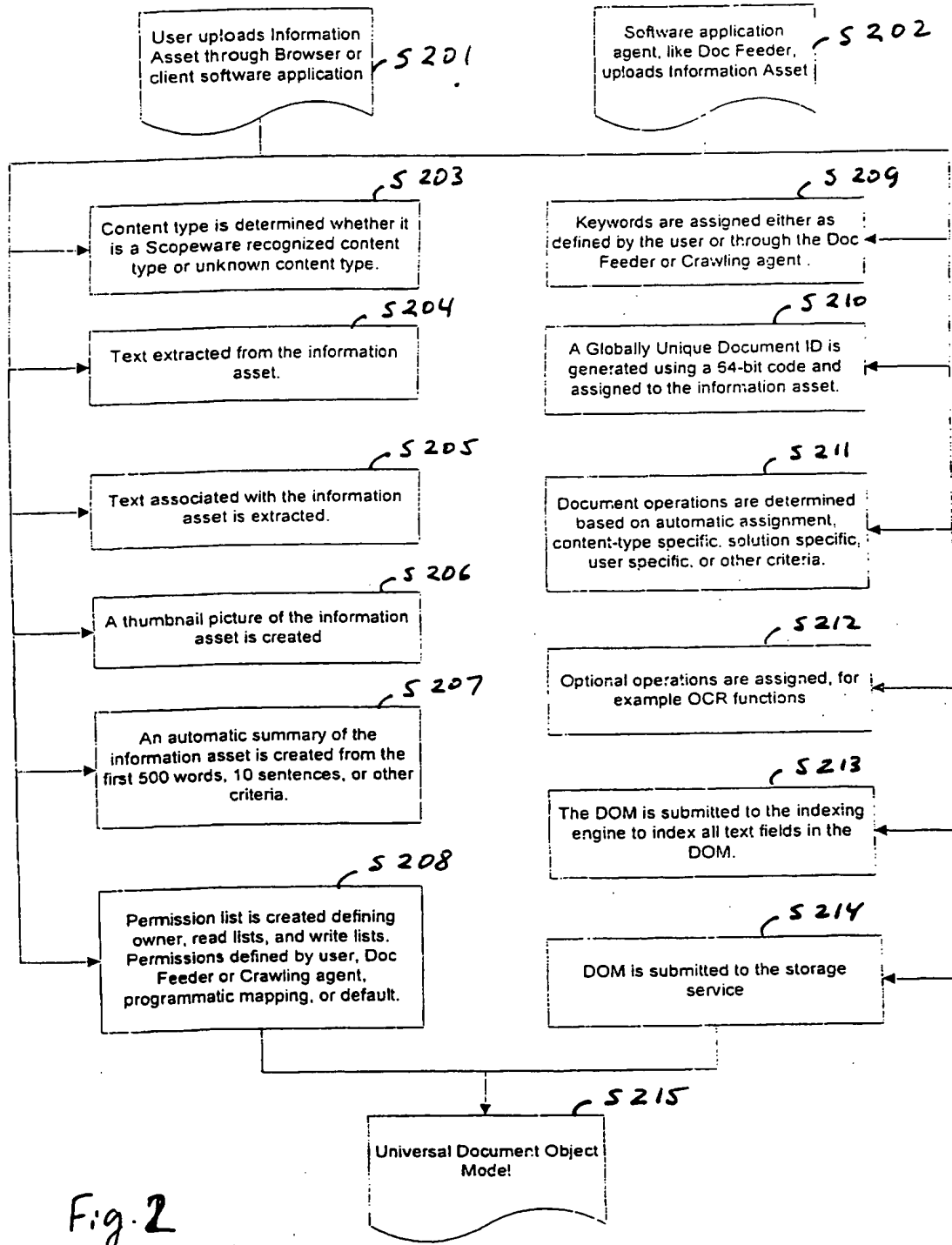
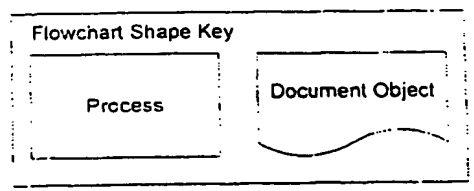


Fig. 2

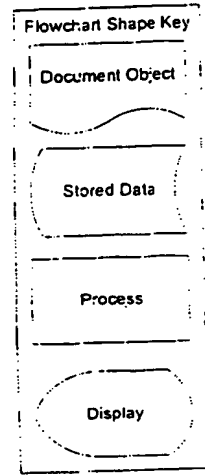
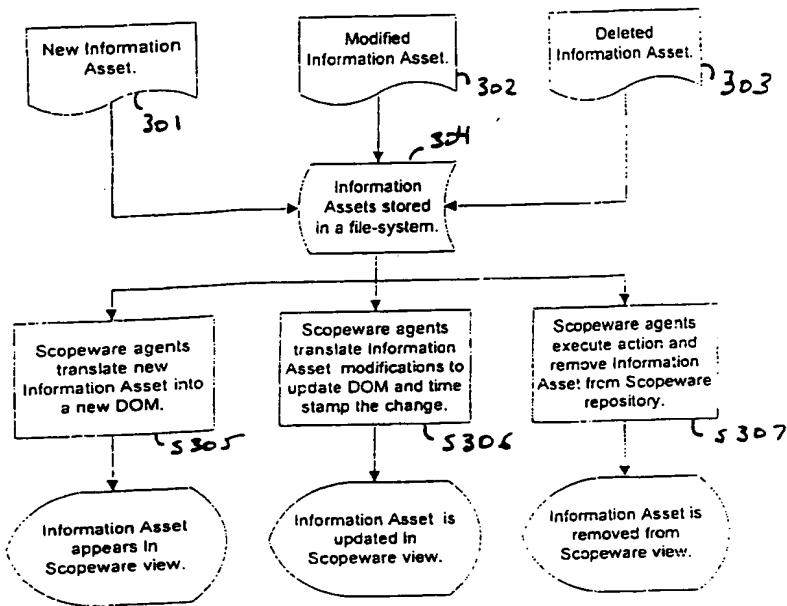


20590 SEE 26860

Scopeware Agents are Translators into Scopeware Document Object Models

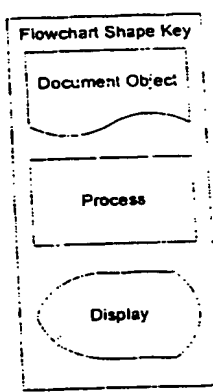
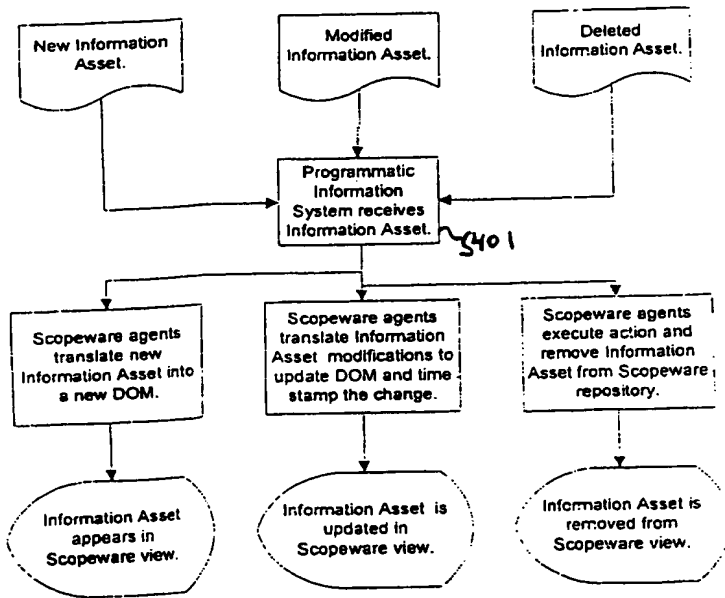
Information Assets in a File-System

Fig. 3



Information Assets in a Programmatic Information System

Fig. 4



205090 5826860

Instantaneously Dynamic, Tailored, and Interactive Document Glance Views

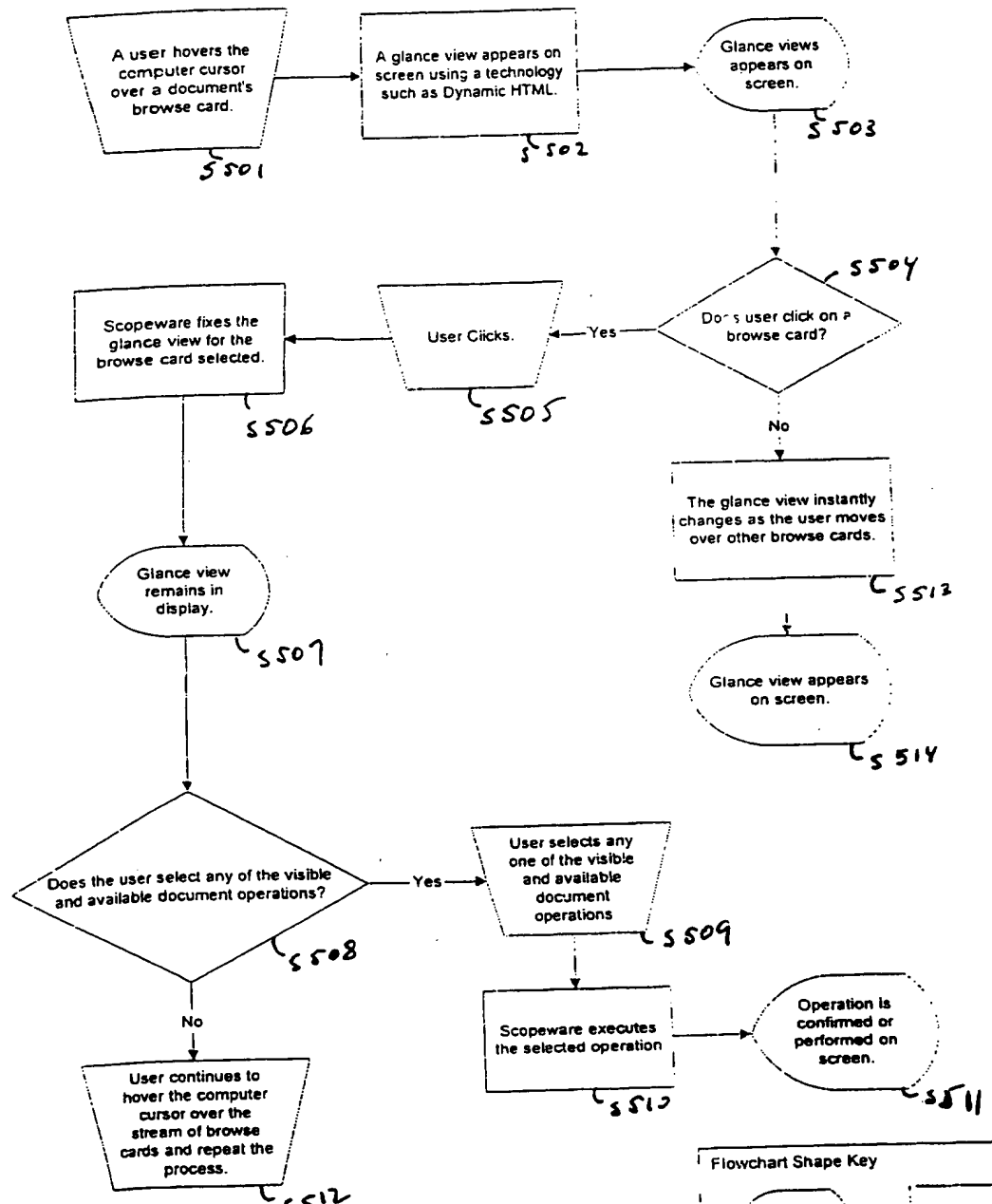


Fig. 5

2025 RELEASE UNDER E.O. 14176

Granular Permissions

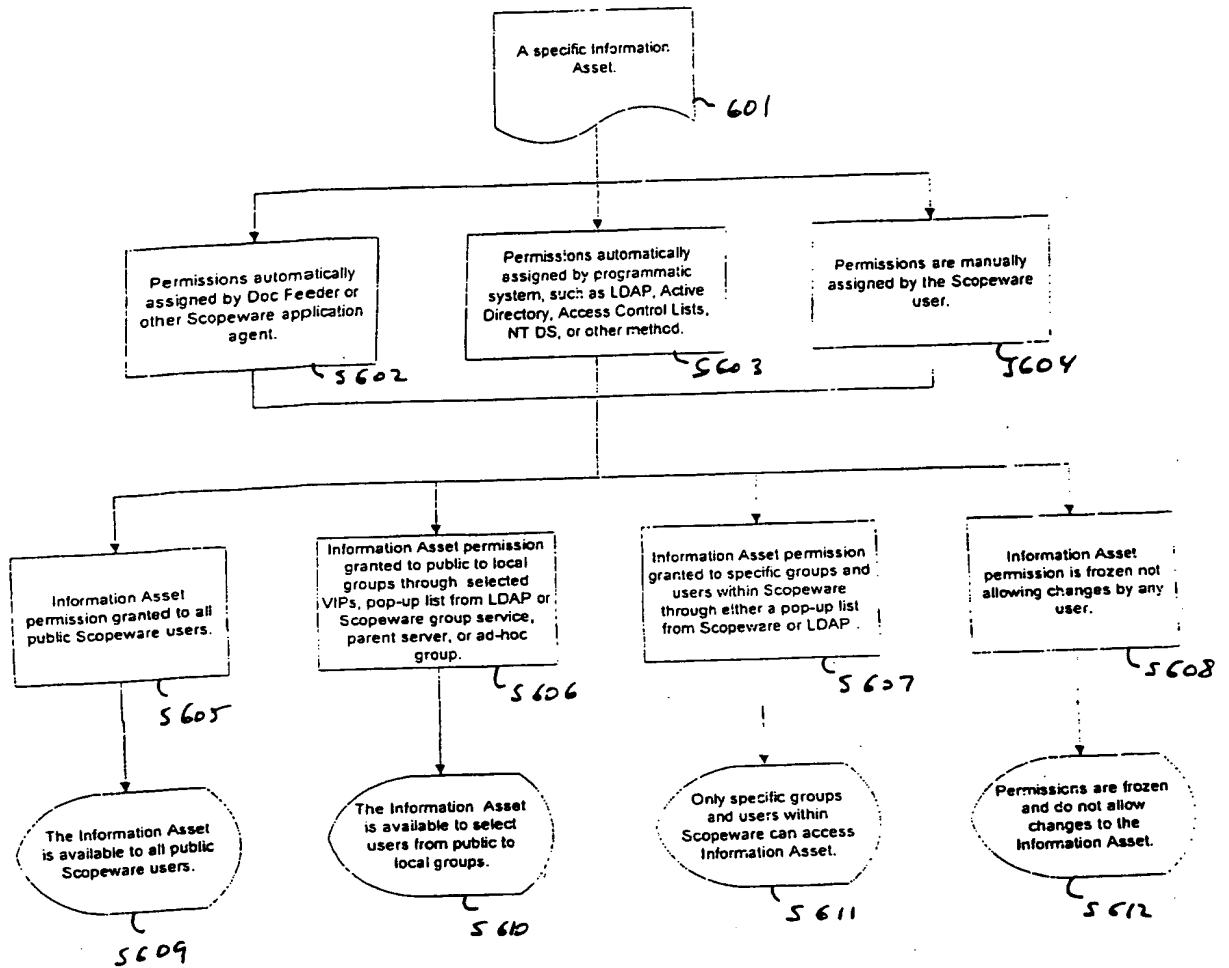
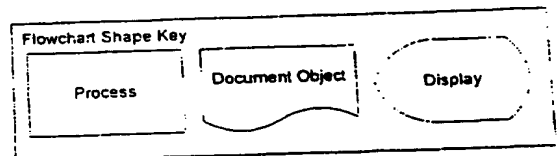


Fig. 6



20590 SEE 680

Integrated Results Sets from Distributed Searches

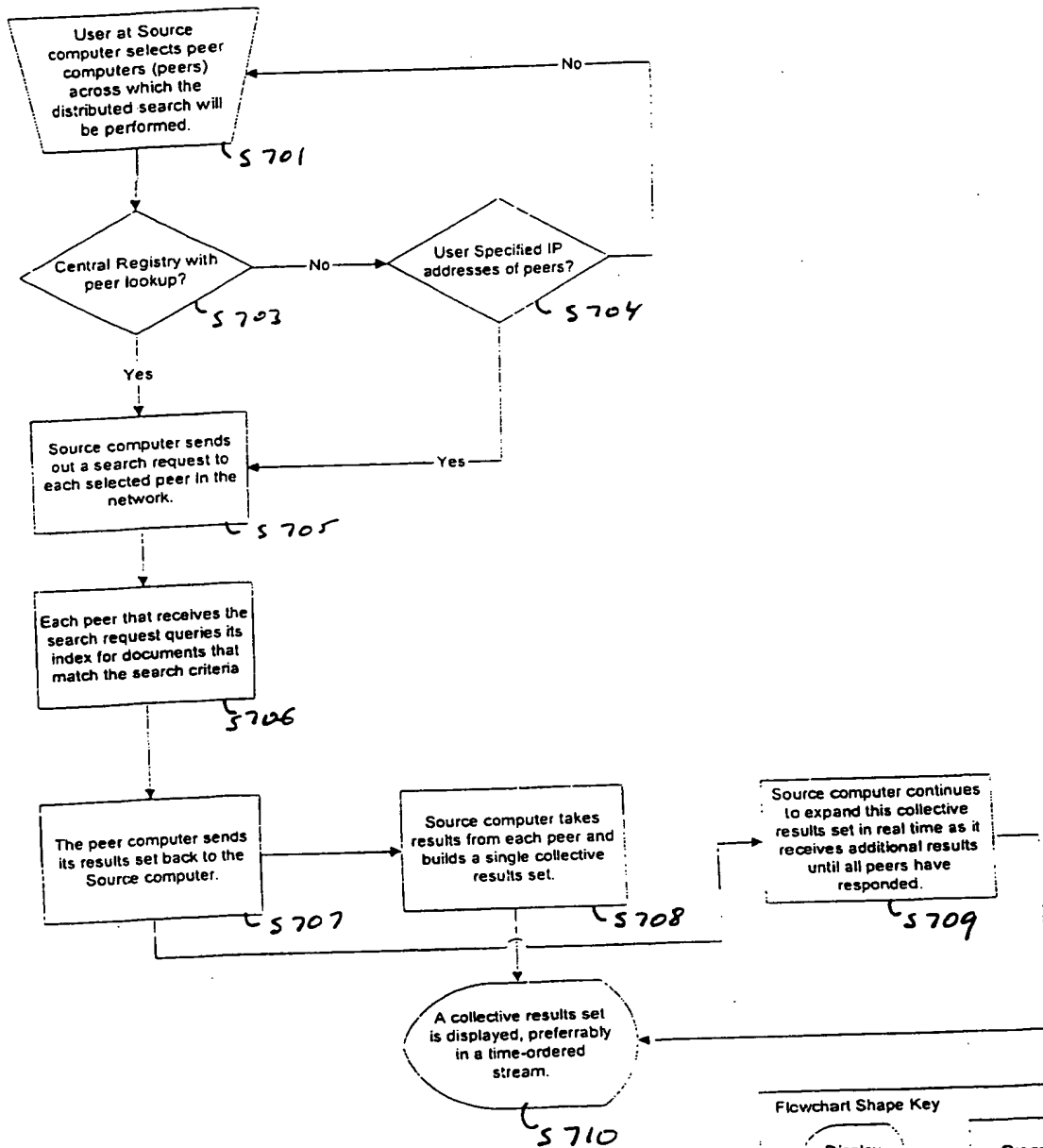
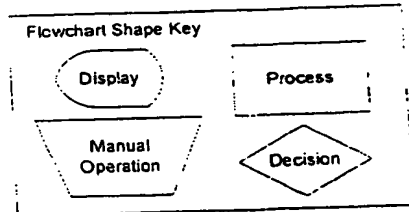


Fig. 7



20250101 09:26:50

Tri-State Selection Tree

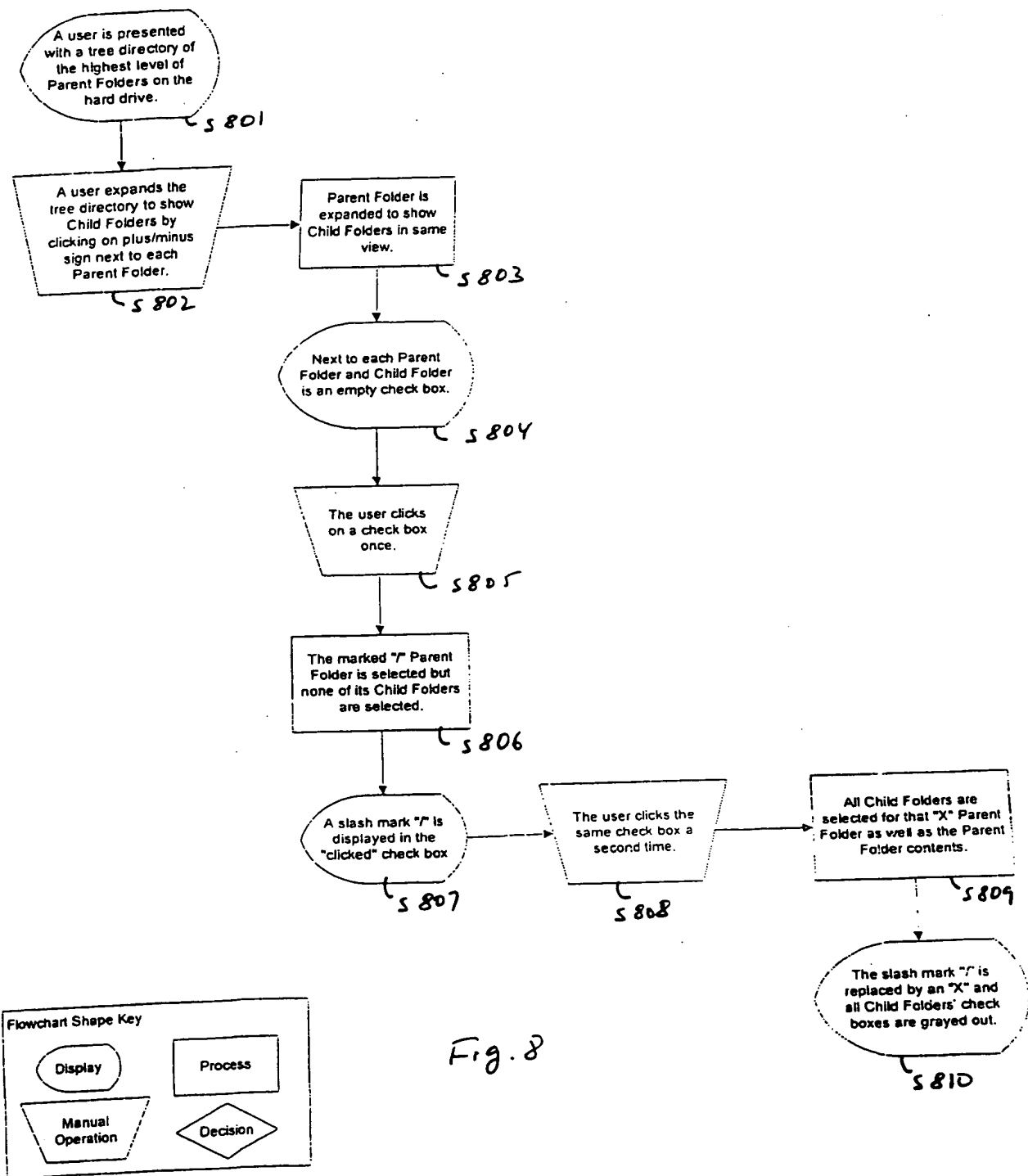
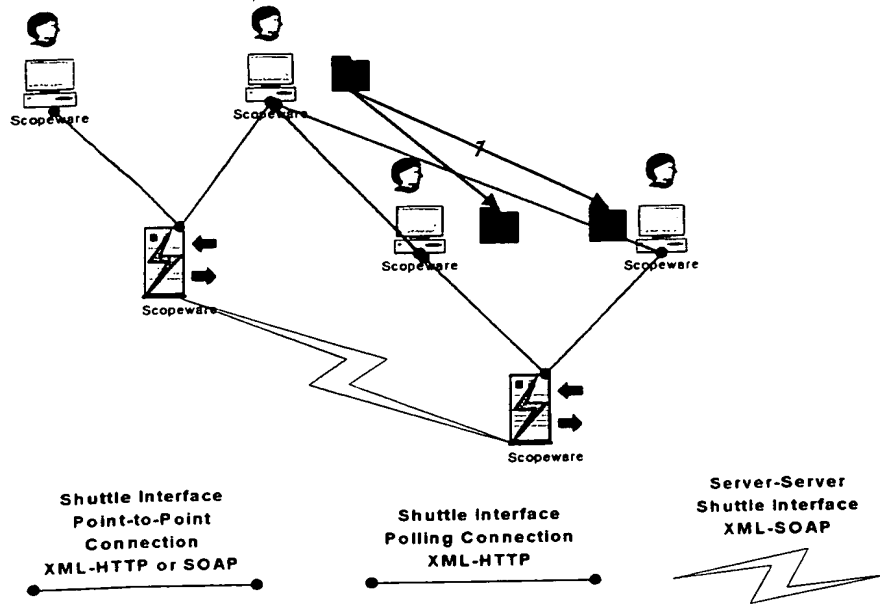


Fig. 8

205090 SEE 26860

BOTTOM-UP STREAM ARCHITECTURE

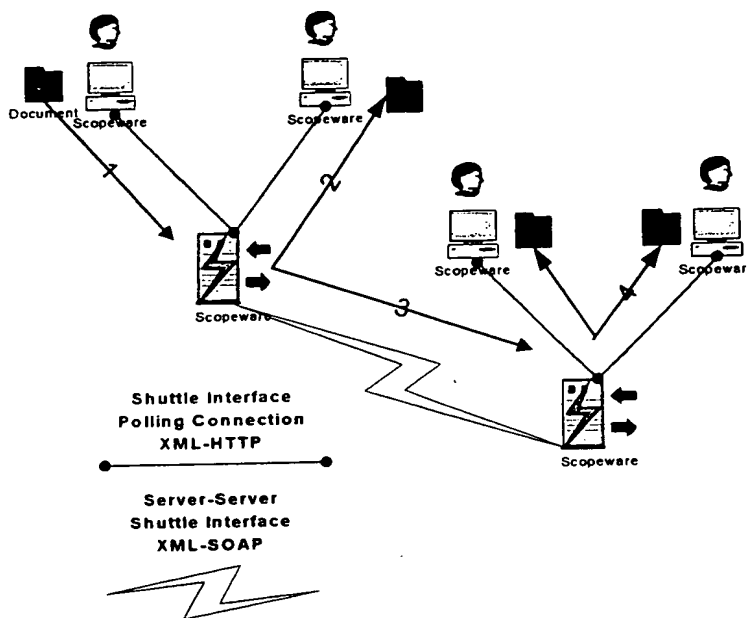


1 – Scopeware clients form an ad-hoc group, connecting directly to other Scopeware clients, using any parent Scopeware server for basic address look-up and resolution. Documents are replicated to each connected group member.

Fig. 9

205090-5826860

TOP-DOWN STREAM ARCHITECTURE



1 – A client creates a document that is sent via the shuttle interface as an XML object to that client's parent server. The local Scopeware client acquires the document (converts a document into the Scopeware XML object). When the document arrives at the server, the parent Scopeware server then acquires the document as well.

2 – Locally connected Scopeware clients that are polling the parent server will receive a document shell notification of a new document matching the selected query, or when performing a search, they will receive the document shell in their stream.

3 – Scopeware server transmits the document to any known Scopeware server peers as an XML object though the shuttle interface. These peers then can either fully acquire the document, or partially acquire the document (indexing it, but then throwing away the document and storing a reference to the originating server storage). This option to fully or partially acquire Server peer documents is set by the administrator.

4 – Locally connected Scopeware clients that are polling the peer server will receive a document shell notification of a new document matching the selected query, or when performing a search they will receive the document shell in their stream. The Scopeware client will have the option of fully acquiring or partially acquiring the document from the connected server depending on administration preferences.

Fig. 10

205090" SEE 26860